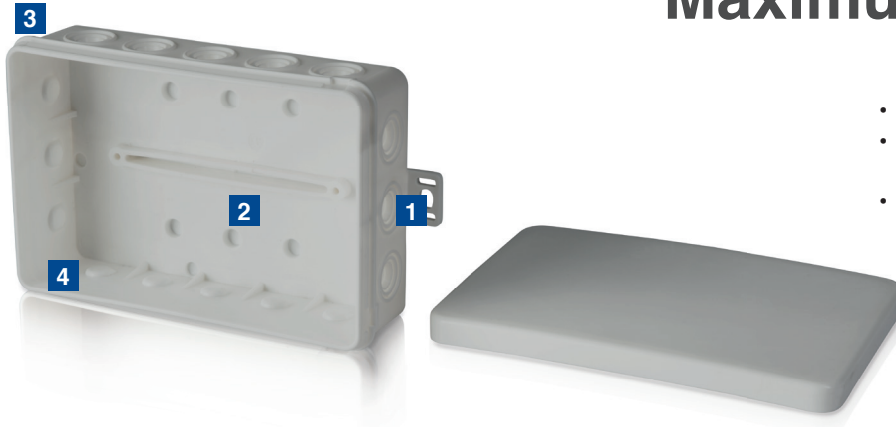


STOCK PROGRAMME 29

Maximum wiring space

Maximum variability



- Easy to install
- Having up to 12 self-sealing cut-off cable entries for cables up to 5 x 2,5 mm²
- External mounting straps with transverse and longitudinal holes for subsequent alignment



1 Mounting tab

With transverse and longitudinal holes for subsequent alignment and fixation with cable ties.



2 Insertion

Flexible cable entry options to the side and on the ground.



3 Protection class IP54

The distribution box series meets the requirements of protection class IP54.



4 Stability

Stable housing and reinforced lid counteract slight twisting.



Type	E126	E126W	E126K	E125
Execution	Distribution box	Distribution box	Distribution box	Distribution box
Item no.	7340141	7340058	7340142	7340139
SU / CB / PL	10 / 300 / 6.000	10 / 300 / 6.000	10 / 300 / 6.000	10 / 200 / 4.000
H x W x D	85 x 44 x 40 mm	85 x 44 x 40 mm	85 x 44 x 40 mm	75 x 75 x 40 mm
max. Cross section	2,5 mm ²	2,5 mm ²	2,5 mm ²	2,5 mm ²
Material	PE	PE	PE	PE
Total inserts	12	12	12	15
Inserts at the side	2	10	10	12
Ground inserts	2	2	2	3
Colour	grey	white	grey	grey



Type	E125K	E113	E113W	E113GN
Execution	Distribution box	Distribution box	Distribution box	Distribution box
Item no.	7340140	7340038	7340043	7340110
SU / CB / PL	10 / 200 / 4.000	10 / 150 / 3.000	10 / 150 / 3.000	10 / 150 / 3.000
H x W x D	75 x 75 x 40 mm	85 x 85 x 40 mm	85 x 85 x 40 mm	85 x 85 x 40 mm
max. Cross section	2,5 mm ²	2,5 mm ²	2,5 mm ²	2,5 mm ²
Material	PE	PE	PE	PE
Total inserts	15	15	15	15
Inserts at the side	12	12	12	12
Ground inserts	3	3	3	3
Colour	grey	grey	white	green



Type	E113R	E113S	E114	E128	E128W
Execution	Distribution box	Distribution box	Distribution box	Distribution box	Distribution box
Item no.	7340111	7340134	7340044	7340149	7340154
SU / CB / PL	10 / 150 / 3.000	10 / 150 / 3.000	10 / 100 / 2.000	5 / 100 / 5.000	5 / 100 / 5.000
H x W x D	85 x 85 x 40 mm	85 x 85 x 40 mm	100 x 100 x 40 mm	134 x 89 x 40 mm	134 x 89 x 40 mm
max. Cross section	2,5 mm ²	2,5 mm ²	2,5 mm ²	2,5 mm ²	2,5 mm ²
Material	PE	PE	PE / PP	PE	PE
Total inserts	15	15	12	22	22
Inserts at the side	12	12	12	16	16
Ground inserts	3	3	-	6	6
Colour	red	black	grey	grey	white

Insertion cutter

- Defined opening of cable entries
- Easy to use
- Ergonomic design



Type	f-cutter
Execution	Insertion cutter
Item no.	7390109
SU / CB / PL	10 / 200 / -
Material	PC

Easy to use

Stable execution

- Easy to install
- Easy to use - no need for expensive, additional tools
- With integrated push-out membranes on all four sides
- With back membrane introduction lines of up to 5x 2,5 mm²
- Version with and without fixing straps



1 Mounting tab

With transverse and longitudinal holes for subsequent alignment and fixation with cable ties.



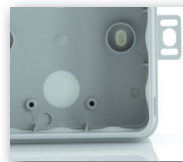
2 Floor entry

Two floor entries for cables up to Ø 14 mm.



3 Internal fixing

Versatile mounting options; with screws also from the inside.



4 No tools required and stable

Tool-free entering and increased stability makes installation particularly convenient.



Type	E1200	E1200w	E1200sw	E1200rt	E1200gn
Execution	Distribution box	Distribution box	Distribution box	Distribution box	Distribution box
Item no.	7340157	7340158	7340165	7340163	7340164
SU / CB / PL	10 / 180 / 3.600	10 / 180 / 3.600	10 / 180 / 3.600	10 / 180 / 3.600	10 / 180 / 3.600
H x W x D	80 x 80 x 37 mm	80 x 80 x 37 mm	80 x 80 x 37 mm	80 x 80 x 37 mm	80 x 80 x 37 mm
max. Cross section	2,5 mm ²	2,5 mm ²	2,5 mm ²	2,5 mm ²	2,5 mm ²
Material	PP / TPE	PP / TPE	PP / TPE	PP / TPE	PP / TPE
Insertion	2	2	2	2	2
7x 1,5 ² / 5x 2,5 ²	12	12	12	12	12
Colour	grey	white	black	red	green
Mounting tab	•	•	•	•	•

Socket boxes

Fire protection

Fastening systems



Type	E1210	E1210w	E1210sw	E1210rt	E1210gn
Execution	Distribution box	Distribution box	Distribution box	Distribution box	Distribution box
Item no.	7340159	7340160	7340168	7340166	7340167
SU / CB / PL	10 / 180 / 3.600	10 / 180 / 3.600	10 / 180 / 3.600	10 / 180 / 3.600	10 / 180 / 3.600
H x W x D	80 x 80 x 37 mm	80 x 80 x 37 mm	80 x 80 x 37 mm	80 x 80 x 37 mm	80 x 80 x 37 mm
max. Cross section	2,5 mm ²	2,5 mm ²	2,5 mm ²	2,5 mm ²	2,5 mm ²
Material	PP / TPE	PP / TPE	PP / TPE	PP / TPE	PP / TPE
Insertion	2	2	2	2	2
7x 1,5 ² / 5x 2,5 ²	12	12	12	12	12
Colour	grey	white	black	red	green
Mounting tab	-	-	-	-	-
Accessories (incl.)	2x insulating seals	2x insulating seals	2x insulating seals	2x insulating seals	2x insulating seals

Distributors

Meter cabinets

Meter connection columns



Type	E830	E831	E832	E833	E834
Execution	floor-mounted Cable trunking box	suspended Cable trunking box	clamping Cable trunking box	clamping Cable trunking box	suspended Cable trunking box
Item no.	7370008	7370037	7370038	7370039	7370040
SU / CB / PL	20 / 200 / 4.000	20 / 200 / 4.000	20 / 200 / 4.000	10 / 100 / 2.000	10 / 100 / 2.000
H x W x D	68 x 68 x 47 mm	68 x 68 x 47 mm	68 x 68 x 47 mm	68 x 142 x 47 mm	68 x 142 x 47 mm
max. Cross section	2,5 mm ²	2,5 mm ²	2,5 mm ²	2,5 mm ²	2,5 mm ²
Material	PP	PP	PP	PP	PP
Insertions	4	4	4	4	4
Suitable for B-Line trunking	•	-	-	-	-
Rehau Signo BK, BS, BA	-	•	-	-	•
Certain Wall trunking	-	•	-	-	•
Licotec installation trunking BR	-	•	-	-	•
Licotec installation duct BRS-F	-	-	•	•	-



- Made of impact-resistant plastic
- Base with pre-creased line outlets
- Incl. 2-piece strain relief
- Cover with quick-close

Type	DB1W	DB1B
Execution	Branch canopy	Branch canopy
Item no.	7330006	7330004
SU / CB / PL	1 / 100 / 6.000	1 / 100 / 6.000
Diameter	Ø 75 mm	Ø 75 mm
Outer depth	23,5 mm	23,5 mm
Interior depth	21 mm	21 mm
max. Cross section	2,5 mm ²	2,5 mm ²
Material	PS	PS
Insertions	1	1
Accessories	incl. 2-piece strain relief	incl. 2-piece strain relief
Colour	white	brown

Damp area distribution box IP65

For stringent requirements and severe operating conditions

- High resistance to breakage
- With pre-punched cable entries
- With double membrane seals (IP54)
- Lid with stainless steel screws
- Insulating and sealing plugs enclosed



Type	FK110	FK111	FK210	FK211
Execution	Distribution box	Distribution box	Distribution box	Distribution box
Item no.	7340060	7340061	7340063	7340064
SU / CB / PL	1 / 70 / 2.240	1 / 70 / 2.240	1 / 30 / 960	1 / 30 / 960
H x W x D	80 x 80 x 63 mm	80 x 80 x 63 mm	110 x 110 x 67 mm	110 x 110 x 67 mm
max. Cross section	4 mm ²	4 mm ²	6 mm ²	6 mm ²
Material	PS	PS	PS	PS
Entry M20	7	7	2	2
M20 / M25	-	-	- / 7	- / 7
M25 / M32	-	-	-	-
M25 / M32 / M40	-	-	-	-
Colour	grey	white	grey	white



Type	FK310	FK311	FK410	FK411
Execution	Distribution box	Distribution box	Distribution box	Distribution box
Item no.	7340066	7340067	7340069	7340070
SU / CB / PL	1 / 24 / 768	1 / 24 / 768	1 / 12 / 384	1 / 12 / 384
H x W x D	140 x 140 x 79 mm	140 x 140 x 79 mm	180 x 180 x 91 mm	180 x 180 x 91 mm
max. Cross section	10 mm ²	10 mm ²	16 mm ²	16 mm ²
Material	PS	PS	PS	PS
Entry M20	2	2	2	2
M20 / M25	5	5	-	-
M25 / M32	5	5	7	7
M25 / M32 / M40	-	-	2	2
Colour	grey	white	grey	white

Socket boxes

Fire protection

Fastening systems

Distributors

Meter cabinets

Meter connection columns

f-tronic®

installing innovation

f-tronic GmbH

Zum Gerlen 21-25

D-66131 Saarbrücken

Phone +49 6893 9483-0

Fax +49 6893 9483-94

info@f-tronic.de

Catalogue as at: 07/2019

Art.Nr.: 9950666

Layout and design

f-tronic® GmbH

Note: we reserve the right to make technical changes or modify the contents of this document at any time without prior notice. When ordering, the particulars shall prevail. **f-tronic®** assumes no responsibility for any errors or omissions in this document. We reserve all rights in this document and in the subject matter and illustrations contained therein. Reproduction or use of its contents is prohibited without the prior, written consent of **f-tronic®**.

Copyright © 2019 **f-tronic®**

All rights reserved