

Installing innovation!



Socket boxes

Diversity can't be beaten

f-tronic offers a wide range of installation material for every installation requirement. No matter whether flush mount, cavity wall, surface-mounted, IP 54 or IP 65-application - we have the right product for you. In 2004, we were a pioneer, bringing the first wind-proof box on the market.

Due to a variety of switches, sockets and intelligent, decentralized building control, you can today install more than 80 wall or flush-mounted boxes. This trend will continue further in the future. A complete installation with the wind-proof boxes from f-tronic guarantees the constructor sustainable increase in energy efficiency and brings comfort by avoiding draft. Wherever you need to avoid disruptive circulating air in your electrical installation, our windproof flush mounted and cavity wall socket boxes with puncture membrane are the first choice.

A cost-efficient installation is possible with our standard flush mount and cavity wall socket boxes. This group of products is rounded off by flush mounted junction boxes and accessories such as spring cover, signal cover and plaster compensating rings.

Benefit from our high manufacturing quality and many f-tronic extras in the IP 54 and IP 65 products. Patented and unique. The IP 54 junction box with puncture membrane and captive, fed cover.

Socket boxes.....	37
Flush mounted installation, windproof.....	39
Flush mount installation	40
Flush mount installation solid	42
Flush mount installation accessories	43
Cavity wall installation, windproof.....	47
Cavity wall installation.....	49
Fire Protection Socket Boxes	51
Cavity wall installation solid	52
Cavity wall installation accessories	53
Built-in light housing.....	57
Damp area installation	59
Trunking boxes / surface-mounted installation.....	61
Concrete installation	63
Multi function box	83



The electronics box in a windproof design allows, for example, convenient installation of electronic components and provides enough space to comply with the bending radius during laying of data lines.



The new cavity wall electronics box provides a lateral connection compartment with fast and clean single-hole mounting.



Windproof flush-mounted socket boxes, screw spacing 60 mm, with soft-entry membranes

- Guaranteed windproof thanks to 2-component insertion
- Easy to install
- Easy handling without additional tools
- Guaranteed standard combination distance
- 20 or 25 mm pipe connection
- Can be combined with attachable nail tabs E104
- Material: PP, TPE, recyclable



Item No.	Type	Design	Depth (mm)	Colour	SU	CB	PL
7320026	E1062K	Socket box with 25 mm pipe connection, with 4 screw domes	46	black	25	300	6.000
7320028	E1072K	Socket box with 25 mm pipe connection, with 4 screw domes	62	black	25	200	4.000



Electronic windproof socket boxes with soft entry membrane

- For installation in EIB modules, relays or LV transformers up to 48 mm building height
- Windproof thanks to 2-component insertion
- Easy to install – simple handling without additional tools
- Can be converted into a 2-way socket box by means of 12 mm plaster adjustment ring
- Can be expanded thanks to standard combination distance
- M20 or M25 pipe connections
- Material: PP, TPE, recyclable

Item No.	Type	Design	Depth (mm)	Colour	SU	CB	PL
7320009	E550	Electronic socket box with 25 mm pipe connection, with 4 screw domes and 2 device screws	67	black	10	80	1.600



Plug connections with press-out membrane, windproof

- Ingenious, simple and reliable
- Windproof, and suitable for retrofitting
- For all flexible insulation pipes
- Essential item in any service vehicle
- Material: TPE, recyclable

Item No.	Type	Design	Colour	SU	CB	PL
9930014	E06	for pipes with external diameter of 16 mm (inside diameter 11 mm)	grey	50	6.000	192.000
9930015	E07	for pipes with external diameter of 20 mm (inside diameter 15 mm)	grey	50	5.000	100.000
9930016	E08	for pipes with external diameter of 25 mm (inside diameter 19.5 mm)	grey	50	4.500	90.000
9930017	E09	for pipes with external diameter of 32 mm (inside diameter 25 mm)	grey	50	1.500	24.000
9930018	E10	for pipes with external diameter of 40 mm (inside diameter 31.5 mm)	grey	50	1.000	24.000

Flush-mounted installation

Flush-mounted socket boxes, screw spacing 60 mm, with 25 mm tube insertion

- 20 and 25 mm tube insertion
- 4 screw domes
- Can be combined with attachable nail tabs E104
- Material: PS, recyclable

Item No.	Type	Design	Depth (mm)	Colour	SU	CB	PL
7310129	E106M25	Socket box	45	black	25	300	6.000
7310130	E106M25S	Socket box with pre-assembled fitting screws	45	black	25	300	6.000
7310131	E107M25	Socket box	65	black	25	200	4.000
7310132	E107M25S	Socket box with fitting screws	65	black	25	200	4.000



Flush-mount junction box diameter 72 mm, 35 mm deep

- Material: PS, recyclable

Item No.	Type	Design	Colour	SU	CB	PL
7310133	E110	with 11 cable and leading-in tubes	black	25	300	6.000
7390022	E112H	Screw cap for junction box E110	white	50	1.000	32.000



Flush-mount accessory junction boxes with lateral terminal chambers

- Material: PS, recyclable

Item No.	Type	Design	H x W x D (mm)	Colour	SU	CB	PL
7310063	E510	with 2 device screws 15 mm and pipe sockets 25 mm	110 x 71 x 45	black	10	100	2.000





Flush-mounted junction boxes

For clearly arranged wiring with option of circuit separation.

The size of 150 x 150 mm is suitable for retrofitting of 35 mm standard top hat rails or terminals.

- With pre-stamped push-out openings up to 38 mm
- Including cover screws and cover in white
- Material: PS, recyclable

Item No.	Type	Design	Depth (mm)	Colour	SU	CB	PL
7310060	E140	80 x 80 mm, Unmounted	80 x 80 x 50	grey	10	200	4.000
7310061	E141	100 x 100 mm, Unmounted	100 x 100 x 50	grey	10	150	3.000
7310062	E142	150 x 150 mm, Unmounted	150 x 150 x 60	grey	10	30	600



Flush-mounted wall outlet boxes

- For VDE approved installations of cable outlets
- With integral plug for attachment of wall lamps
- Integral pre-stamped push-out openings for cables and pipes
- Including cover
- Material: PS, recyclable

Item No.	Type	Design	Depth (mm)	Colour	SU	CB	PL
7310077	WAD	Including cover	60 x 31 x 31	white	25	500	10.000



Flush-mounted socket boxes screw spacing 60 mm, for Austria

The standard wall boxes E810 and E811 are tested according to EN60670 by the ÖVE and have plenty of product benefits. Cables and pipes can be inserted from the side and from behind up to a diameter of 20 mm. The boxes bear self-centering thanks to the distance piece in the borehole and provide a better fixing of the switch in the boxes thanks to the ribs inside. Both models can be strung together allowing the mounting of pre-assembled unit combinations.

- Leading-in tubes up to 20 mm
- Installation of pre-assembled combinations possible
- Any combination
- Material: PS, type E122 PE, recyclable

Item No.	Type	Design	Depth (mm)	Colour	SU	CB	PL
7310064	E810	Flush-mount standard socket box	45	black	25	200	4.000
7310066	E811	Flush-mount standard socket box - doubled execution	45	black	10	100	2.000
7390027	E122	Signal cover 70 mm, for UP socket box Austria	k.A.	red	50	1,000	20.000

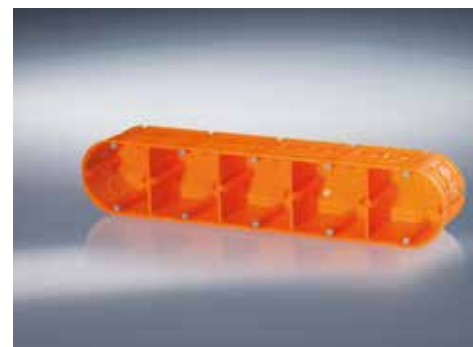
Flush-mounted installation solid



Multiple flush-mounted socket boxes, solid

Our solid multiple flush-mounted boxes are equipped with variable baffles that allow for a flexible installation. The push-out openings facilitate inserting cables. Depending on model, they are delivered with 4, 6, 8 or 10 fitting screws.

- Extremely solid material, high wall thickness
- Flexible installation thanks to variable baffles
- The push-out openings for easy insertion of cables
- For 4 and 5-way designs, additional push-out openings on sides for cable channels or pipes up to 16 mm diameter.
- Material: PP, recyclable



Item No.	Type	Design	Depth (mm)	Colour	SU	CB	PL
7310102	UP20	Flush-mounted socket box, solid, 2-way, 2 x screw spacing 60 mm	63	orange	10	90	1.800
7310103	UP30	Flush-mounted socket box, solid, 3-way, 3 x screw spacing 60 mm	63	orange	5	50	2.000
7310104	UP40	Flush-mounted socket box, solid, 4-way, 4 x screw spacing 60 mm	63	orange	5	40	800
7310105	UP50	Flush-mounted socket box, solid, 5-way, 5 x screw spacing 60 mm	63	orange	5	35	700

Accessories for multiple flush-mounted socket boxes

- Semi-circular or square flush-mounted covers allow for the covering of the complete connection space of the multiple box and protect the inside of the socket box during plastering.
- Optional covering of the outer spaces of the socket box instead of a junction box with additional connection space
- Material: PP, recyclable



Item No.	Type	Design	Colour	SU	CB	PL
7390055	UPD1	Flush-mounted cover semi-circle for multiple flush-mounted socket boxes	orange	50	1.000	20.000
7390056	UPD2	Flush-mounted cover, square for multiple flush-mounted socket boxes	orange	50	1.000	20.000



Plaster compensating rings

- To compensate deep-seated accessory and junction boxes
- With pre-assembled device screws length 15 mm
- Plaster compensating rings with the same diameter can be mounted together
- Material: PS, recyclable

Item No.	Type	Design	Depth	Color	SU	CB	PL
7390028	E130	For socket boxes Screw spacing 60 mm	12	red	50	1.200	24.000
7390032	E131	For junction boxes Screw spacing 70 mm	12	red	50	1.000	20.000
7390033	E132	For socket boxes Screw spacing 60 mm	24	red	50	500	10.000
7390035	E133	For junction boxes Screw spacing 70 mm	24	red	50	400	8.000



Signal cover

- For a simple locating of accessory and junction boxes after plastering
- Reusable
- Protects the inside of boxes, the screw domes and the screw heads during plastering
- Material: PE, LD, recyclable

Item No.	Type	Design	Color	SU	CB	PL
7390024	E120	For socket boxes screw spacing 60 mm	red	50	1.500	30.000
7390026	E121	For junction box screw distance 70 mm	red	50	1.000	20.000



Universal screw cap

- For VDE-compliant covering of accessory and junction boxes.
- Diameter 92 mm for socket boxes screw spacing 60 mm and junction boxes type E110
- With 5 pre-shaped screw holes for double and single screw fixing
- Including 2 fixing screws (15 mm)
- Material: PS, recyclable

Item No.	Type	Design	Color	SU	CB	PL
7390022	E112H	Suitable for all accessory - and junction boxes screw spacing 60 and 70 mm, Including 2 screws	white	50	1.000	32.000

Flush-mounted installation accessories

Nail straps for inserting

Thanks to the newly developed attachable nail straps, f-tronic is setting new standards in flexibility in installation technology for flush mount installation. You only need the nail tag for attaching which can be combined with every flush mount box from our range thanks to their unique plug-in system. Save double storing and gain flexibility for your projects.

- Suitable for flush-mounting boxes, junction boxes:
E106M25, E107M25, E1062K, E1072K
- Material: PS, recyclable

Item No.	Type	Design	Color	SU	CB	PL
7390069	E104	Nail straps for inserting	red	50	1.000	48.000



Application example



Spring covers

- Sturdy, impact-resistant plastic design
- Wide fitting springs
- With slanted edge of the cover for a clean finish against the wall
- Material: PS, recyclable

Item No.	Type	Design	Color	SU	CB	PL
7390016	E109A	For socket boxes screw spacing 60 mm	white	50	1.000	20.000
7390015	E109	For junction boxes screw spacing 70 mm	white	50	800	16.000



Device screws

Item No.	Type	Design	SU	CB	PL
9920005	E152/15	Slotted screw 3.2 x 15 mm	100	20.000	480.000
9920007	E152/25	Slotted screw 3.2 x 25 mm	100	15.000	360.000
9920009	E152/40	Slotted screw 3.2 x 40 mm	100	10.000	240.000



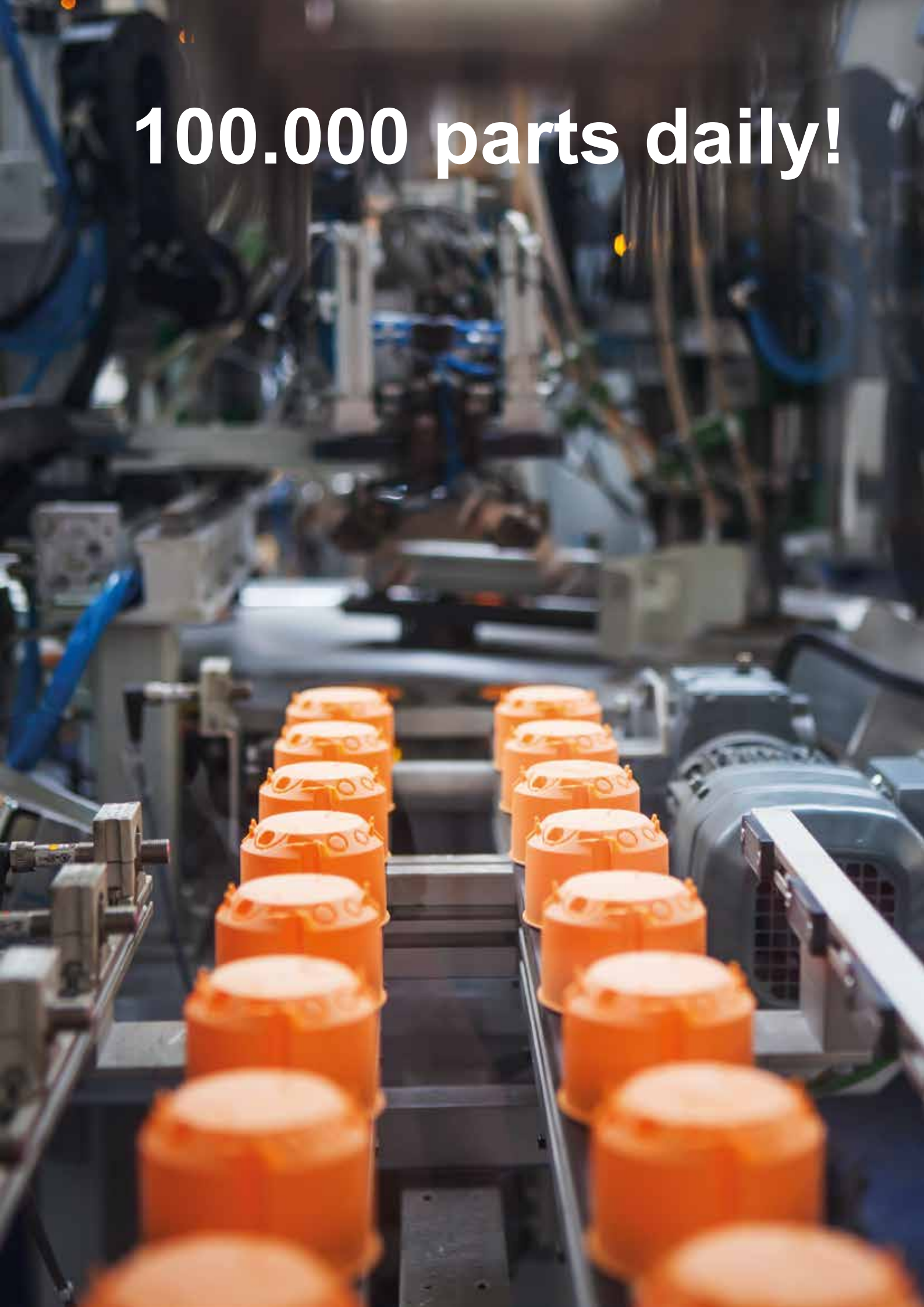
Line retrieval device SEG50

The handy device for blowing or pulling a cord during installation in residential, commercial and industrial buildings. Can be used to move several hundred meters of cord also for kinked tubes or Flexpipe.

- Suitable for pipe inner diameter from 16 to 50 mm.
- Delivery in a practical case with accessories
- For inner tube diameter 16 - 50 mm
- Up to 300 m length
- For kinked pipe and Flexpipe
- Dual function for blowing and sucking

Item No.	Type	Design	SU	CB	PL
7390071	SEG50	Line retrieval device with accessories in case	1	1	20
7390072	SEG-ES51	Replacement cord, 900 m length, tension force 24 kg	10	10	84

100.000 parts daily!





New!



Cavity wall socket boxes with press-out membrane, windproof

The cavity wall boxes with press-out membrane are guaranteed windproof and quickly installed. Cables or pipes can be pushed without additional tools through the membranes which decreases your normal working time.

Thanks to the new development of our guaranteed windproof cavity wall boxes with press-out membrane, you only need two boxes in your range of products instead of three, which thus saves valuable storage space. The new E2700 replaces the E2000 and the new E3700 replaces the E3500 and the E4000. All boxes now have 2 x M25 leading-in tubes and a variety of other leading-in points with optimized cable retention. Of course, all models of this series are VDE certified.

- Guaranteed windproof
- Sustainably increases energy efficiency in buildings
- Creates more comfort by preventing drafts
- Easy to install
- Easy handling without additional tools
- Milling hole diameter 68 mm
- 4 cable entries: (2 x) M25, (2 x) 3 x 1.5 mm², (2 x) 3 x 2.5 mm² - 5 x 1.5 mm²
- including windproof connection socket E105
- E3700 also has 2 more cable glands for 7 x 1.5 mm² or 5 x 2.5 mm²
- Material: PP, TPE, recyclable

Item No.	Type	Design	Deep box (mm)	Color	SU	CB	PL
7360028	E2700	Socket box	47	orange	25	300	6.000
7360027	E3700	Equipment connection socket	61	orange	25	400	4.800

New!



Cavity wall junction box with press-out membrane, Windproof

- Guaranteed windproof
- Sustainably increases energy efficiency in buildings
- Creates more comfort by preventing drafts
- Easy to install
- Easy handling without additional tools
- Milling hole diameter 120 mm
- Including cover, white
- Material: PP, TPE, recyclable

Item No.	Type	Design	Diameter (mm)	Color	SU	CB	PL
7360016	E816	including cover	120	orange	20	20	1.280



Plug connections with press-out membrane, windproof

- Brilliant, easy, reliable
- Wind-proof and can be retrofitted
- For all flexible insulated pipes
- No service vehicle can be without it
- Material: TPE, recyclable

Item No.	Type	Design	Color	SU	CB	PL
9930014	E06	For tubes with outer diameter of 16 mm (Inside diameter 11 mm)	grey	50	6.000	192.000
9930015	E07	For tubes with outer diameter of 20 mm (Inside diameter 15 mm)	grey	50	5.000	100.000
9930016	E08	For tubes with outer diameter of 25 mm (Inside diameter 19.5 mm)	grey	50	4.500	96.000
9930017	E09	For tubes with outer diameter of 32 mm (Inside diameter 25 mm)	grey	50	1.500	24.000
9930018	E10	For tubes with outer diameter of 40 mm (Inside diameter 31.5 mm)	grey	50	1.000	24.000



Connection socket, windproof

- For wind-proof through wiring in box combinations
- Material: PP, recyclable

Item No.	Type	Design	Color	SU	CB	PL
7390075	E105	Connecting socket For windproof cavity wall boxes	orange	25	500	160.000





Cavity wall junction box

- Milling hole diameter 74 mm
- Delivery includes screw cap E112H
- Material: PP, recyclable

Item No.	Type	Design	Deep box (mm)	Color	SU	CB	PL
7350043	E119	Includes screw cap	50	orange	10	200	4.000



Cavity wall junction box

- Delivery includes screw cap 104 x 104 mm, white
- Material: PP, recyclable

Item No.	Type	Design	Color	SU	CB	PL
7350033	E116	Includes screw cap, 104 x 104 mm	orange	1	80	1.600



Cavity wall junction box

- Milling hole diameter 120 mm
- Including cover, white
- Material: PP, recyclable

Item No.	Type	Design	Color	SU	CB	PL
7350046	E815	Includes screw cap	orange	20	20	1.280



Cavity wall cable outlet

- Milling hole diameter 35 mm
- Including cover, white
- Material: PP, recyclable

Item No.	Type	Design	Deep box (mm)	Color	SU	CB	PL
7350098	E134	including cover	45	orange	25	500	10.000

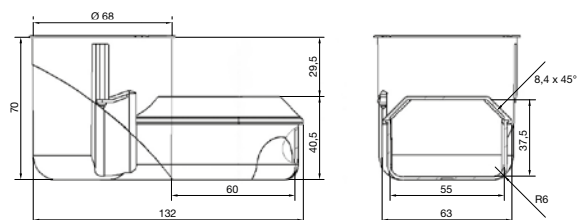
Cavity wall installation

Cavity wall electronics box

Technology that inspires! With the new electronics box, new standards are set in your Cavity wall installation. It couldn't be faster! Thanks to single-hole mounting, install quickly and easily and enjoy all benefits of a double socket. Thus you have enough space for complying with the bending radius, especially in the transfer of data lines or can install electronic components in a side tunnel.

- 70% time saving during assembly
- Single-hole mounting
- Lateral connection space for all commonly used relays and actuators
- Easy compliance with the bending radius for network cables
- Material: PP, TPE, recyclable

Item No.	Type	Design	Color	SU	CB	PL
7350066	E5000	Cavity wall electronics box	orange	10	100	2.000



© Video

Cavity wall socket boxes

The proven design with metal claw fasteners for cost-efficient installation in cavity walls.

- With pre-assembled device screws
- With breakout openings for wires and pipes
- Milling hole diameter 68 mm
- Material: PP, recyclable

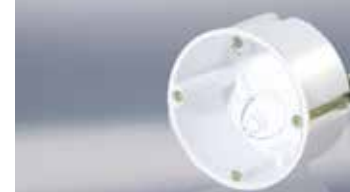
Item No.	Type	Design	Deep box (mm)	Color	SU	CB	PL
7350099	E135	Socket box without VDE	35	orange	25	300	6.000
7350094	E115	Socket box	47	orange	25	300	6.000
7350096	E117	Equipment connection socket	61	orange	25	400	4.800
7350041	E118	Doubled socket box	47	orange	10	100	2.000



Halogen-free cavity wall socket boxes

- Milling hole diameter 68 mm
- Material: PP, recyclable

Item No.	Type	Design	Deep box (mm)	Color	SU	CB	PL
7350095	E115HF	Socket box	47	white	25	300	6.000
7350097	E117HF	Equipment connection socket	61	white	25	400	4.800





Passive Fire Protection systems

Intelligent technology, which protects you when the going gets tough.

The innovative technology reacts immediately when it comes into contact with fire and heat, and effectively prevents the spread of fire. When heated the material inside the socket box foams and thus seals the installation opening completely. In this way, our fire protection boxes guarantee effective fire protection and ensure the integrity of fire-rated walls for at least 90 minutes. Plus installation is remarkably simple, it even allows fitting from the opposite side and retrofitting.

Get to know our Europe-wide certified fire protection socket boxes assortment, respected not only for meeting legal fire protection requirements, but also for demonstrable safety in rooms and escape routes when it matters most.

- Fire resistance class EI90
- European Technical Approval (ETA) 15/0598
- DIBt approval pending
- Retrofitting and fitting from the opposite side possible
- Available in three configurations: shallow, deep and double
- Halogen-free
- Material: High-strength, temperature-resistant special plastic 'SAFE 90'
- Up to 5 socket boxes can be mounted
- For 2 cables with respectively max. Ø 14,4 mm

Item No.	Type	Design	Depth	SU	CB	PL
7500001	BS115	Installation Socket Box, Opening Ø 74 mm *	45	12	192	3.744
7500002	BS117	Installation Socket Box, Opening Ø 74 mm *	54	12	192	3.456
7500003	BS118	Double Installation Socket Box, Opening Ø 74 mm *	54	6	96	1.584
7500030	BS112	Single Socket Box Case Cover	k.A.	10	100	9.000
7500031	BS112/2	Double Socket Box Case Cover	k.A.	5	20	4.800

* Before installing make contact with the relevant building control authority and the fire prevention officer.



Video

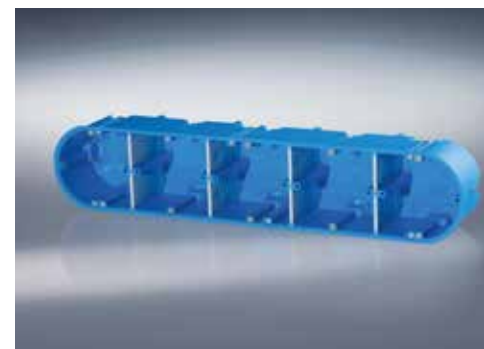
Solid cavity wall installation

Multiple cavity wall socket boxes, solid

Our solid multiple cavity wall socket boxes are equipped with variable dividers which allow for a flexible installation. The breakout openings enable simple insertion of cables. Depending on the version, you are supplied with 4, 6, 8, or 10 device screws.

- Extremely solid material, high wall thickness
- Flexible installation thanks to variable dividers
- With breakout openings for easy insertion of cables
- For 4 and 5-way designs, additional push-out openings on sides for cable channels or pipes up to 16 mm diameter.
- Flame retardant up to 960° C
- Material: PA6, recyclable

Item No.	Type	Design	Deep box (mm)	Color	SU	CB	PL
7350061	HW10	Solid cavity wall socket box, single, milling hole 68 mm	60	blue	20	240	4.800
7350062	HW20	Solid cavity wall socket box, double, milling hole 68 mm	60	blue	10	90	1.800
7350063	HW30	Solid cavity wall socket box, triple, milling hole 68 mm	60	blue	5	50	1.000
7350064	HW40	Solid cavity wall socket box, four-way, milling hole 68 mm	60	blue	5	40	800
7350065	HW50	Solid cavity wall socket box, five-way, milling hole 68 mm	60	blue	5	35	700
7350093	HW60	Solid cavity wall socket box, six-way, milling hole 68 mm	60	blue	1	30	600



* suitable for frame width 85 mm.
For smaller frame size there is a gap in the intermediate area

Accessories multiple cavity wall boxes

- Semi-circular or square cover allows covering the complete connection area of the multiple socket.
- Flush final cover with the box rim
- Suitable for separate covering of a part area of the box so the second area can therefore be utilised as additional installation space
- Flame retardant up to 950° C
- Material: PP, recyclable

Item No.	Type	Design	Color	SU	CB	PL
7390057	HWD1	Half round lid For multiple cavity wall socket boxes	white	50	1.000	48.000
7390058	HWD2	Cap square For multiple cavity wall socket boxes	white	50	1.000	48.000

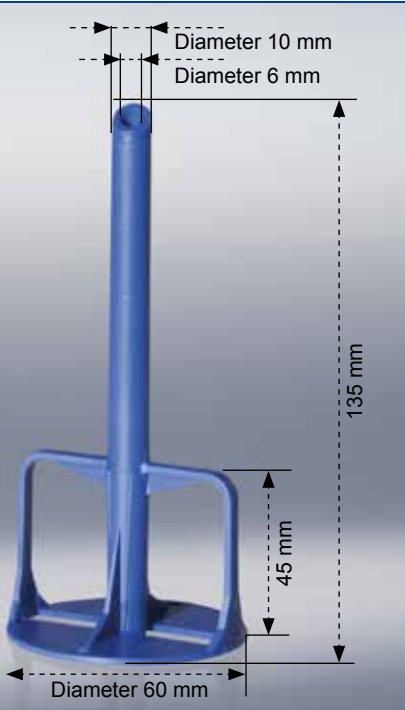


Pipe brackets

The self adhesive pipe bracket and plunger allows you to quickly find the cables in lightweight walls. The dry wall builder knocks out a hole with a hammer and lets the central spike get through, this serves as a centre for the drill bit. Speedy milling without re-measuring the mounting locations is therefore guaranteed.

Advantages at a glance

- Safe location of pipes with closed wall
- Centering the hole to fit the installation boxes
- No unnecessary removal of insulating material
- No injuries through pool tests of cavity wall, C profiles and insulation materials
- Enormous time and cost savings
- In combinations, only one plunger must be affixed, the other boxes can be drilled out using the drill template



Pipe brackets

- Material: PP, recyclable

Item No.	Type	Design	SU	CB	PL
7390049	HWLT1	Pipe brackets including adhesive disk	50	50	5.600
7390048	BOS2	Drilling template for cavity wall box with plastic sleeve	1	42	840
7390074	KDKS	Adhesive disk	25	500	56.000



Video



Drilling template
Ideal accessory for a pipe bracket

Drilling template

For cavity wall boxes

- Straight and precise
- Faster and more accurate work
- Also five-way combinations are possible



Adhesive disk
For pipe bracket

Huge time savings - no more searching for pipes



1 Glue the pipe bracket on the back of the first cladding.



2 Pull through the cables or pipes. (You will be amazed about the enormous holding capacity of the adhesive disk).



3 The dry wall builder knocks out a hole with a hammer and lets the central spike get through, this serves as a centre for the drill bit.



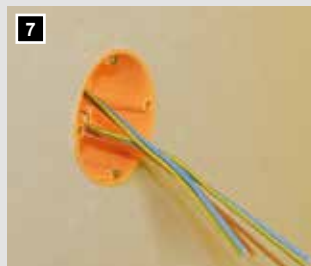
4 You can mill the hole without re-measuring the mounting location.



5 Draw pipe brackets and pipes out of the wall.



6 Without a long time searching for cables, you can install the cavity wall box.



7 Finished installation - simple and quick.



8 Can be used also as collection holder in suspended ceilings. Without drilling, simply stick and you're done.

Huge time savings - no more searching for pipes



1 Drilling a central hole



2 Precise alignment with the integrated bubble level.



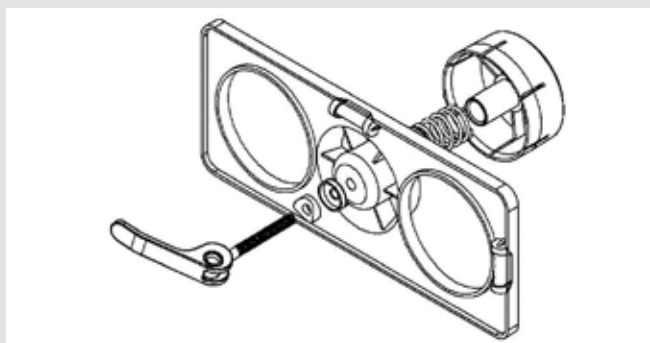
3 Then drill through the existing hole inserts.



4 Attach the drilling template with the tensioner.



5 Inserting the template.



Installing a cavity wall box with the mounting aid/drilling template

Mounting aid for 68 mm cavity wall boxes combinations with a hole saw.

A must for all those who want to install electric cavity wall boxes in wood walls, plasterboard or other cavity walls!



Universal screw cap

- For VDE-compliant covering of devices - and junction boxes.
- Diameter 92 mm for socket boxes screw spacing 60 mm and junction boxes type E110
- With 5 pre-shaped screw holes for double and single screw fixing
- Including 2 fixing screws (15 mm)
- Material: PS, recyclable

Item No.	Type	Design	Color	SU	CB	PL
7390022	E112H	Suitable for all accessory - and junction boxes screw spacing 60 and 70 mm, Including 2 screws	white	50	1.000	32.000



Spring Cover

- Sturdy, impact-resistant plastic design
- Wide fitting springs
- With slanted edge of the cover for a clean finish against the wall
- Material: PS, recyclable

Item No.	Type	Design	Color	SU	CB	PL
7390016	E109A	For socket boxes diameter 60 mm	white	50	1.000	20.000
7390015	E109	For junction boxes diameter 70 mm	white	50	800	16.000



Device screws

Item No.	Type	Design	SU	CB	PL
9920005	E152/15	Slotted screw 3.2 x 15 mm	100	20.000	480.000
9920007	E152/25	Slotted screw 3.2 x 25 mm	100	15.000	360.000
9920009	E152/40	Slotted screw 3.2 x 40 mm	100	10.000	240.000



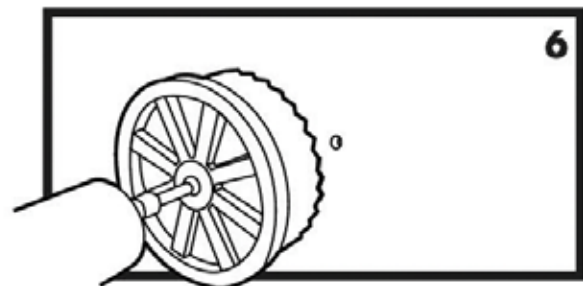
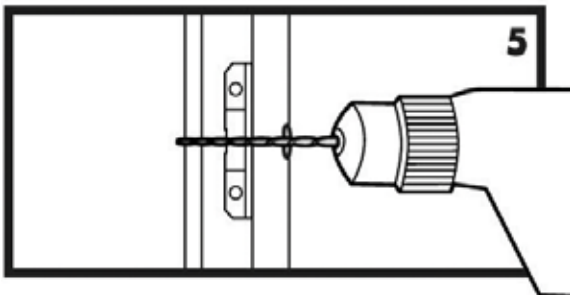
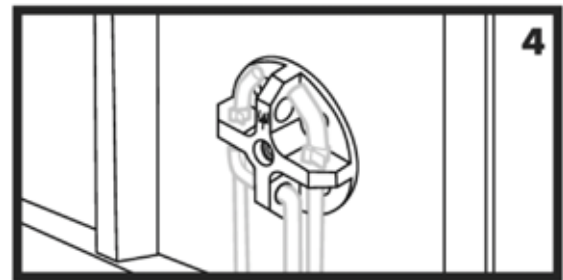
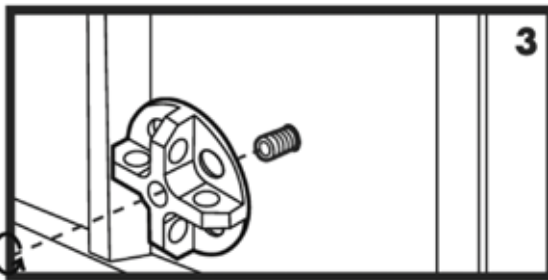
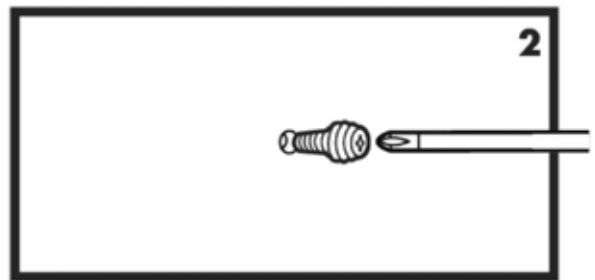
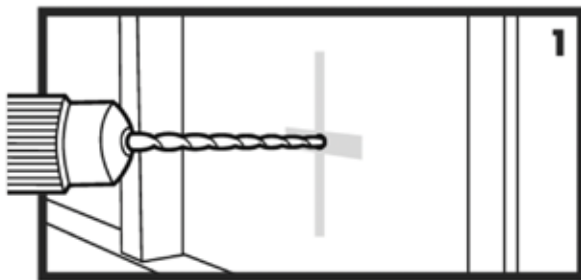
Memofix

MEMOFIX is the new way of working.
Search for a pipe, then annoyingly tinker around to get it out of the wall, repair the wall and home drive exasperated? Put the wire clip aside and test MEMOFIX!
With MEMOFIX unerringly find your cables laid into dry walls.
Save the annoying searching and save time and money.
No more cable waste and no nasty surprises.
You can no longer imagine having worked without MEMOFIX.



© Video

Item No.	Type	Design	SU	CB	PL
7390076	MFX	Mounting aid for cavity wall boxes	10	200	5.400





Video

Built-in light housing

The built-in light housings are used for shielding the built-in spotlight from dust, insects and all possible materials which come into contact in the cavity with the rear of the built-in spotlight and thus can lead to fire in the building. All built-in housings are made of silicone.

- Suitable for halogen built-in spotlights
- Ceiling cut-out diameter 68 mm or 75 mm
- Installation depth 70 mm
- Outlet opening diameter 66 mm or 73 mm
- Built-in light height max. 67 mm
- 2 lateral flaps for spring clip, length 50 mm, width 26 mm
- For bulbs up to 35 W
- No cool beam bulb
- Material: Silicone

Item No.	Type	Design	Box depth (mm)	SU	CB	PL
7380001	LEG1	Built-in light housing Outer diameter 68 mm	70	10	340	2.720
7380002	LEG2	Built-in light housing Outer diameter 75 mm	70	10	300	2.400



Video

Built-in light housing - high voltage

- Suitable for high-voltage - halogen built-in spotlights
- Ceiling cut-out diameter 68 mm
- Installation depth 100 mm
- Outlet opening diameter 66 mm
- Built-in light height max. 90 mm
- 2 lateral flaps for spring clip, length 50 mm, width 26 mm
- Suitable for LED, energy saving bulb
- For bulbs up to 35 W
- No cool - beam bulb
- Material: Silicone

Item No.	Type	Design	Box depth (mm)	SU	CB	PL
7380003	LEG-H3	Built-in light housing for high-voltage halogen built-in spotlights outer diameter 68 mm	100	10	300	2.400

Built-in light housing, windproof



Built-in light housing - windproof

The built-in lighting housing - windproof has quick mounting technology without the use of springs. The circumferential sealing ribs are used for installation gearing. The housing is suitable for installation in brittle materials such as plasterboard, insulation and fibre boards.

- Completely windproof
- Quick mounting technology
- Ceiling cut-out diameter 68 mm
- Inner diameter 60 mm
- Built-in light height low-voltage max. 65 mm
- No cool - beam bulb
- Bulb up to 35 W with aluminium reflector
- Material: Silicone



Item No.	Type	Design	Box depth (mm)	SU	CB	PL
7380004	LEG-WD4	Built-in light housing - windproof Outer diameter 68 mm	65	10	300	2.400

Lights spacer

The lights spacer keeps damp-proof foil and insulation wool apart from hot bulbs and prolongs the life of the bulb.

- Suitable for low and high voltage built-in spotlights
- Installation opening 60-82 mm
- Installation depth 75 mm
- Material: PA6, recyclable



Item No.	Type	Design	Box depth (mm)	SU	CB	PL
7380005	LEAH1	Lights spacer b = 60-82 mm	75	25	100	7.200