



**VPN industrial router**  
Telecontrol, remote maintenance  
and alarm – simply and safely

**Managing from a distance.**





### Applications

- Energy systems
  - Wind turbines
  - Solar farms
  - Biogas cogeneration systems
  - Heat pumps, ...
- Water and waste water Management
- System monitoring in machine building
  - Washing machines
  - Packaging machines
  - Compressors, ...
- External surveillance camera
- Vending
  - Telemetry online sales or ticket machines
- Smart metering
- Mobile Fleet Management



## **wienet** VPN Industrial Router – unlimited M2M communication

### Functionality which convinces

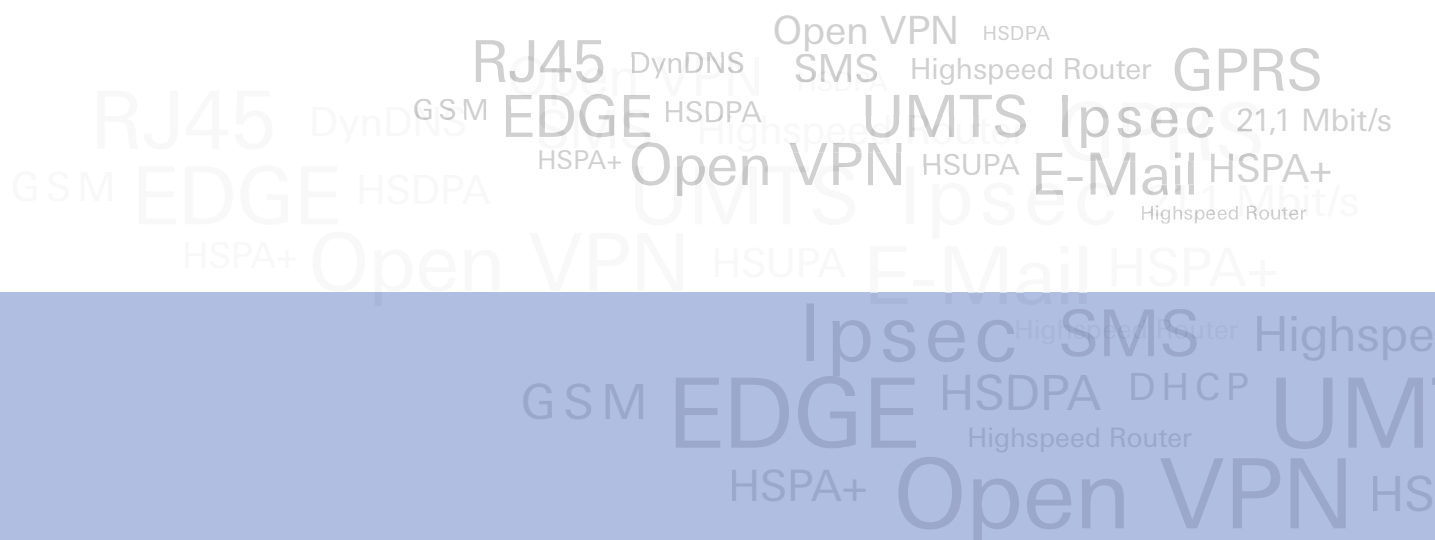
Whether it is about the control of machines, monitoring of production lines or the coordination of all production areas a permanent communication between devices is needed to complete such a complex task. Access to stored data using wireless networks is not always possible or safe. Now Wieland offers with its modern router technology the possibility of completing such complex tasks. For example control commands, level indicators or video signals can now be transmitted. At download speeds of up to 100 Mbit/s and upload speeds of up to 50 Mbit/s (depending on the network operator) the **wienet** VPN industrial router is sure to cover the available connectivity options of GPRS up to LTE. With automatic login **wienet** VPN industrial router will always access the fastest available connection.

Each router has its own IP address and can be configured through the integrated web interface.

It supports services such as DHCP, NAT and DynDNS. The routers communicate directly or via the control panel to open a secure VPN connection. The establishment of an IPSec encrypted tunnel is alternatively possible.

**wienet** VPN routers are ideal components for industrial use in conjunction with VPN-service portals, such as Wie-Service24.

With the arrangement of the ports on the front-panel and a standard USB port, the **wienet** VPN industrial router are extremely user friendly. A clear statistic of mobile connections is used for better control. Optionally, the devices are available with a second SIM card slot, additional I/O, RS-232, RS-422/RS-485, M-Bus, second Ethernet interface, Wi-Fi module or integrated 3 port switch.



# Industrial Mobile Router – GSM/GPRS/EDGE

## EDGE mobile router „Basic“ wienet EDGE ER75i v2

- 1x SIM-card-slot
- 1x RJ45-Port extension
- Inclusive antenna
- Inclusive RJ45-Patch cable
- Inclusive DIN Rail clip
- Plastic or metal housing



Type	Port 1	Port 2	Part No.	Part No.
<b>EDGE mobile router basic version</b>			Aluminium	Plastic
<b>wienet EDGE ER75iv2</b>	-	-	83.041.0000.1	83.041.0000.0
<b>wienet EDGE ER75iv2 RS232</b>	RS-232	-	83.041.0001.1	-
<b>wienet EDGE ER75iv2 RS485/422</b>	RS-485/422	-	83.041.0002.1	-
<b>wienet EDGE ER75iv2 MBUS</b>	M-Bus	-	83.041.0003.1	-
<b>wienet EDGE ER75iv2 CNT</b>	4DI, 2DO, 2AI	-	83.041.0004.1	83.041.0004.0
<b>wienet EDGE ER75iv2 ETH</b>	Ethernet	-	83.041.0005.1	83.041.0005.0

### Technical Data

Housing	Aluminium	Plastic
Dimensions (mm) W x H x D	42 x 113 x 81	42 x 113 x 76
Weight	280 g	220 g
Transmission	GSM/GPRS/EDGE (Class 10)	
Frequency bands	850/900/1800/1900 MHz	
SIM-card-slots	1	
RJ45-extension-ports	1	
Interfaces	Ethernet 10/100 Mbit/s; USB 2.0 Type A (Host); 1x Digital In / 1x Digital Out	
Max. Download/Upload	236 Kbit/s / 118,4 Kbit/s	
VPN-Client for encrypted connection to the control center	IPSec Client/Server; OpenVPN Client/Server; L2TP; PPTP	
Mounting	DIN-rail or table	
Operating voltage	10 - 30 V DC	
Operating temperature	-30 ... +60°C	
Antenna	External GSM-antenna (SMA - 50 Ohm)	
Approvals	CE	
Norms	EN 301 511, v 9.0.2; EN 301 908-1&2, v 3.2.1; ETSI EN 301 489-1 V1.8.1; EN 60950-1:06 ed. 2 + A11:09	

### Functions

Support of NAT/PAT and X.509  
 Firewall (SPI)  
 VPN: OpenVPN, IPSec, L2TP, GRE  
 Easy web interface, DHCP, DynDNS, VRRP; Dial-in  
 Router-control by SMS  
 Comprehensive mobile statistic options  
 Data volume-/roaming-control by SMS  
 Status information by SNMP and SMS  
 Status by LED  
 FTP  
 Linux based Operating System: ability to integrate their own applications

## EDGE mobil router „Full“ wienet EDGE ER75i v2f SL

- 2x SIM-card-slot
- 2x RJ45-Port extension
- Inclusive antenna
- Inclusive RJ45-Patch cable
- Inclusive DIN Rail clip
- Plastic or metal housing



Type	Port 1	Port 2	Part No.	Part No.
<b>EDGE mobil router full version</b>			Aluminium	Plastic
<b>wienet EDGE ER75iv2f SL</b>	-	-	83.041.0100.1	-
<b>wienet EDGE ER75iv2f SL RS232</b>	RS-232	-	83.041.0101.1	-
<b>wienet EDGE ER75iv2f SL RS485/422</b>	RS-485/422	-	83.041.0102.1	-
<b>wienet EDGE ER75iv2f SL MBUS</b>	M-Bus	-	83.041.0103.1	-
<b>wienet EDGE ER75iv2f SL IO</b>	IO	-	83.041.0104.1	-
<b>wienet EDGE ER75iv2f SL ETH</b>	ETH	-	83.041.0105.1	-
<b>wienet EDGE ER75iv2f SL WIFI</b>	-	WI-FI/WLAN	83.041.0106.1	-
<b>wienet EDGE ER75iv2f SL RS232 RS232</b>	RS-232	RS-232	83.041.0111.1	-
<b>wienet EDGE ER75iv2f SL RS485 RS232</b>	RS-485/422	RS-232	83.041.0112.1	-
<b>wienet EDGE ER75iv2f SL MBUS RS232</b>	M-Bus	RS-232	83.041.0113.1	-
<b>wienet EDGE ER75iv2f SL CNT RS232</b>	IO	RS-232	83.041.0114.1	-
<b>wienet EDGE ER75iv2f SL ETH RS232</b>	ETH	RS-232	83.041.0115.1	-
<b>wienet EDGE ER75iv2f SL RS485 RS485</b>	RS-485/422	RS-485/422	83.041.0122.1	-
<b>wienet EDGE ER75iv2f SL MBUS RS485</b>	M-Bus	RS-485/422	83.041.0123.1	-
<b>wienet EDGE ER75iv2f SL CNT RS485</b>	IO	RS-485/422	83.041.0124.1	-
<b>wienet EDGE ER75iv2f SL ETH RS485</b>	ETH	RS-485/422	83.041.0125.1	-
<b>wienet EDGE ER75iv2f SL RS232 WIFI</b>	RS-232	WI-FI/WLAN	83.041.0161.1	-
<b>wienet EDGE ER75iv2f SL RS485 WIFI</b>	RS-485/422	WI-FI/WLAN	83.041.0162.1	-
<b>wienet EDGE ER75iv2f SL MBUS WIFI</b>	M-Bus	WI-FI/WLAN	83.041.0163.1	-
<b>wienet EDGE ER75iv2f SL CNT WIFI</b>	IO	WI-FI/WLAN	83.041.0164.1	-
<b>wienet EDGE ER75iv2f SL ETH WIFI</b>	ETH	WI-FI/WLAN	83.041.0165.1	-
<b>wienet EDGE ER75iv2f SL 3P</b>	3-port Switch	3-port Switch	83.041.0199.1	-

### Technical Data

SIM-card-slots	2
RJ45-extension-ports	2
Further technical data see basic version	

### Functions

see basic version

# Industrial Mobile Router – UMTS

## UMTS mobil router „Basic“ wienet UMTS UR5 v2

- 1x SIM-card-slot
- 1x RJ45-Port extension
- Inclusive antenna
- Inclusive RJ45-Patch cable
- Inclusive DIN Rail clip
- Plastic or metal housing



Type	Port 1	Port 2	Part No.	Part No.
<b>UMTS mobile router basic version</b>			Aluminium	Plastic
<b>wienet UMTS UR5v2</b>	-	-	83.041.0020.1	83.041.0020.0
<b>wienet UMTS UR5v2 RS232</b>	RS-232	-	83.041.0021.1	-
<b>wienet UMTS UR5v2 RS485/422</b>	RS-485/422	-	83.041.0022.1	-
<b>wienet UMTS UR5v2 MBUS</b>	M-Bus	-	83.041.0023.1	-
<b>wienet UMTS UR5v2 CNT</b>	4DI, 2DO, 2AI	-	83.041.0024.1	-
<b>wienet UMTS UR5v2 ETH</b>	Ethernet	-	83.041.0025.1	83.041.0025.0

Technical Data		
Housing	Aluminium	Plastic
Dimensions (mm) W x H x D	42 x 113 x 81	42 x 113 x 76
Weight	280 g	220 g
Transmission	GSM/GPRS/EDGE/UMTS/HSDPA	
Frequency bands - Dual-Band	UMTS: 900/2100 MHz; GSM: 900/1800 MHz	
SIM-card-slots	1	
RJ45-extension-ports	1	
Interfaces	Ethernet 10/100 Mbit/s; USB 2.0 Type A (Host); 1x Digital In / 1x Digital Out	
Max. Download/Upload	3,6 Mbit/s / 384Kbit/s	
VPN-Client for encrypted connection to the control center	IPSec Client/Server; OpenVPN Client/Server; L2TP; PPTP	
Mounting	DIN-rail or table	
Operating voltage	10 - 30 V DC	
Operating temperature	-30 ... +60°C	
Antenna	External GSM-antenna (SMA - 50 Ohm)	
Approvals	CE	
Norms	EN 301 511, v 9.0.2; EN 301 908-1&2, v 3.2.1; ETSI EN 301 489-1 V1.8.1; EN 60950-1:06 ed. 2 + A11:09	

Functions		
Support of NAT/PAT and X.509		
Firewall (SPI)		
VPN: OpenVPN, IPsec, L2TP, GRE		
Easy web interface, DHCP, DynDNS, VRRP; Dial-in		
Router-control by SMS		
Comprehensive mobile statistic options		
Data volume-/roaming-control by SMS		
Status information by SNMP and SMS		
Status by LED		
FTP		
Linux based Operating System: ability to integrate their own applications		

## UMTS mobile router „Full“ wienet UMTS UR5 v2f SL

- 2x SIM-card-slot
- 2x RJ45-Port extension
- Inclusive antenna
- Inclusive RJ45-Patch cable
- Inclusive DIN Rail clip
- Plastic or metal housing



Type	Port 1	Port 2	Part No.	Part No.
<b>UMTS mobile router full version</b>			Aluminium	Plastic
<b>wienet UMTS UR5v2f SL</b>	-	-	83.041.0200.1	-
<b>wienet UMTS UR5v2f SL RS232</b>	RS-232	-	83.041.0201.1	-
<b>wienet UMTS UR5v2f SL RS485/422</b>	RS-485/422	-	83.041.0202.1	-
<b>wienet UMTS UR5v2f SL MBUS</b>	M-Bus	-	83.041.0203.1	-
<b>wienet UMTS UR5v2f SL IO</b>	IO	-	83.041.0204.1	-
<b>wienet UMTS UR5v2f SL ETH</b>	ETH	-	83.041.0205.1	-
<b>wienet UMTS UR5v2f SL WIFI</b>	-	Wi-Fi/WLAN	83.041.0206.1	-
<b>wienet UMTS UR5v2f SL RS232 RS232</b>	RS-232	RS-232	83.041.0211.1	-
<b>wienet UMTS UR5v2f SL RS485 RS232</b>	RS-485/422	RS-232	83.041.0212.1	-
<b>wienet UMTS UR5v2f SL MBUS RS232</b>	M-Bus	RS-232	83.041.0213.1	-
<b>wienet UMTS UR5v2f SL CNT RS232</b>	IO	RS-232	83.041.0214.1	-
<b>wienet UMTS UR5v2f SL ETH RS232</b>	ETH	RS-232	83.041.0215.1	-
<b>wienet UMTS UR5v2f SL RS485 RS485</b>	RS-485/422	RS-485/422	83.041.0222.1	-
<b>wienet UMTS UR5v2f SL MBUS RS485</b>	M-Bus	RS-485/422	83.041.0223.1	-
<b>wienet UMTS UR5v2f SL CNT RS485</b>	IO	RS-485/422	83.041.0224.1	-
<b>wienet UMTS UR5v2f SL ETH RS485</b>	ETH	RS-485/422	83.041.0225.1	-
<b>wienet UMTS UR5v2f SL RS232 WIFI</b>	RS-232	Wi-Fi/WLAN	83.041.0261.1	-
<b>wienet UMTS UR5v2f SL RS485 WIFI</b>	RS-485/422	Wi-Fi/WLAN	83.041.0262.1	-
<b>wienet UMTS UR5v2f SL MBUS WIFI</b>	M-Bus	Wi-Fi/WLAN	83.041.0263.1	-
<b>wienet UMTS UR5v2f SL CNT WIFI</b>	IO	Wi-Fi/WLAN	83.041.0264.1	-
<b>wienet UMTS UR5v2f SL ETH WIFI</b>	ETH	Wi-Fi/WLAN	83.041.0265.1	-
<b>wienet UMTS UR5v2f SL 3P</b>	3-port Switch	3-port Switch	83.041.0299.1	-

Technical Data		
SIM-card-slots	2	
RJ45-extension-ports	2	
Further technical data see basic version		

Functions		
see basic version		

# Industrial Mobile Router – HSPA+

## HSPA+ mobile router „Basic“ wienet HSPA+ UR5i v2

- 1x SIM-card-slot
- 1x RJ45-Port extension
- Inclusive antenna
- Inclusive RJ45-Patch cable
- Inclusive DIN Rail clip
- Plastic or metal housing



Type	Port 1	Port 2	Part No.	Part No.
<b>HSPA+ mobile router basic version</b>			Aluminium	Plastic
<b>wienet HSPA+ UR5iv2</b>	-	-	83.041.0040.1	83.041.0040.0
<b>wienet HSPA+ UR5iv2 RS232</b>	RS-232	-	83.041.0041.1	-
<b>wienet HSPA+ UR5iv2 RS485/422</b>	RS-485/422	-	83.041.0042.1	-
<b>wienet HSPA+ UR5iv2 MBUS</b>	M-Bus	-	83.041.0043.1	-
<b>wienet HSPA+ UR5iv2 CNT</b>	4DI, 2DO, 2AI	-	83.041.0044.1	-
<b>wienet HSPA+ UR5iv2 ETH</b>	Ethernet	-	83.041.0045.1	83.041.0045.0

### Technical Data

Housing	Aluminium	Plastic
Dimensions (mm) W x H x D	42 x 113 x 81	42 x 113 x 76
Weight	280 g	220 g
Transmission	GSM/GPRS/EDGE/UMTS/HSDPA/HSPA+	
Frequency bands	Quad-Band UMTS (WCDMA): 850/900/1900/2100 MHz Quad-Band GSM/GPRS/EDGE: 850/900/1800/1900 MHz	
SIM-card-slots	1	
RJ45-extension-ports	1	
Interfaces	Ethernet 10/100 Mbit/s; USB 2.0 Type A (Host); 1x Digital In / 1x Digital Out	
Max. Download/Upload	21,1 Mbit/s / 5,7Mbit/s	
VPN-Client for encrypted connection to the control center	IPSec Client/Server; OpenVPN Client/Server; L2TP; PPTP	
Mounting	DIN-rail or table	
Operating voltage	10 - 30 V DC	
Operating temperature	-30 ... +60°C	
Antenna	External GSM-antenna (SMA - 50 Ohm)	
Approvals	CE	
Norms	EN 301 511, v 9.0.2; EN 301 908-1&2, v 3.2.1; ETSI EN 301 489-1 V1.8.1; EN 60950-1:06 ed. 2 + A11:09	

### Functions

Support of NAT/PAT and X.509  
 Firewall (SPI)  
 VPN: OpenVPN, IPsec, L2TP, GRE  
 Easy web interface, DHCP, DynDNS, VRRP; Dial-in  
 Router-control by SMS  
 Comprehensive mobile statistic options  
 Data volume-/roaming-control by SMS  
 Status information by SNMP and SMS  
 Status by LED  
 FTP  
 Linux based Operating System: ability to integrate their own applications

## HSPA+ mobilfunkrouter „Full“ wienet HSPA+ UR5i v2f SL

- 2x SIM-card-slot
- 2x RJ45-Port extension
- Inclusive antenna
- Inclusive RJ45-Patch cable
- Inclusive DIN Rail clip
- Plastic or metal housing



Type	Port 1	Port 2	Part No.	Part No.
<b>HSPA+ mobile router full version</b>			Aluminium	Plastic
<b>wienet HSPA+ UR5iv2f SL</b>	-	-	83.041.0400.1	-
<b>wienet HSPA+ UR5iv2f SL RS232</b>	RS-232	-	83.041.0401.1	-
<b>wienet HSPA+ UR5iv2f SL RS485/422</b>	RS-485/422	-	83.041.0402.1	-
<b>wienet HSPA+ UR5iv2f SL MBUS</b>	M-Bus	-	83.041.0403.1	-
<b>wienet HSPA+ UR5iv2f SL IO</b>	IO	-	83.041.0404.1	-
<b>wienet HSPA+ UR5iv2f SL ETH</b>	ETH	-	83.041.0405.1	-
<b>wienet HSPA+ UR5iv2f SL WIFI</b>	-	WI-FI/WLAN	83.041.0406.1	-
<b>wienet HSPA+ UR5iv2f SL RS232 RS232</b>	RS-232	RS-232	83.041.0411.1	-
<b>wienet HSPA+ UR5iv2f SL RS485 RS232</b>	RS-485/422	RS-232	83.041.0412.1	-
<b>wienet HSPA+ UR5iv2f SL MBUS RS232</b>	M-Bus	RS-232	83.041.0413.1	-
<b>wienet HSPA+ UR5iv2f SL CNT RS232</b>	IO	RS-232	83.041.0414.1	-
<b>wienet HSPA+ UR5iv2f SL ETH RS232</b>	ETH	RS-232	83.041.0415.1	-
<b>wienet HSPA+ UR5iv2f SL RS485 RS485</b>	RS-485/422	RS-485/422	83.041.0422.1	-
<b>wienet HSPA+ UR5iv2f SL MBUS RS485</b>	M-Bus	RS-485/422	83.041.0423.1	-
<b>wienet HSPA+ UR5iv2f SL CNT RS485</b>	IO	RS-485/422	83.041.0424.1	-
<b>wienet HSPA+ UR5iv2f SL ETH RS485</b>	ETH	RS-485/422	83.041.0425.1	-
<b>wienet HSPA+ UR5iv2f SL RS232 WIFI</b>	RS-232	WI-FI/WLAN	83.041.0461.1	-
<b>wienet HSPA+ UR5iv2f SL RS485 WIFI</b>	RS-485/422	WI-FI/WLAN	83.041.0462.1	-
<b>wienet HSPA+ UR5iv2f SL MBUS WIFI</b>	M-Bus	WI-FI/WLAN	83.041.0463.1	-
<b>wienet HSPA+ UR5iv2f SL CNT WIFI</b>	IO	WI-FI/WLAN	83.041.0464.1	-
<b>wienet HSPA+ UR5iv2f SL ETH WIFI</b>	ETH	WI-FI/WLAN	83.041.0465.1	-
<b>wienet HSPA+ UR5iv2f SL 3P</b>	3-port Switch	3-port Switch	83.041.0499.1	-

### Technical Data

SIM-card-slots	2
RJ45-extension-ports	2
Further technical data see basic version	

### Functions

see basic version

# Industrial Mobile Router – LTE 4G

## LTE mobile router 4G „Basic“ **wienet LTE LR77 v2 SL**

- 1x SIM-card-slot
- 1x RJ45-Port extension
- Inclusive antenna
- Inclusive RJ45-Patch cable
- Inclusive DIN Rail clip
- Plastic or metal housing



Type	Port 1	Port 2	Part No.	Part No.
<b>LTE-Mobilfunkrouter 4G basic version</b>			Aluminium	Plastic
<b>wienet LTE LR77v2</b>	-	-	83.041.0050.1	83.041.0050.0
<b>wienet LTE LR77v2 RS232</b>	RS-232	-	83.041.0051.1	-
<b>wienet LTE LR77v2 RS485/422</b>	RS-485/422	-	83.041.0052.1	-
<b>wienet LTE LR77v2 MBUS</b>	M-Bus	-	83.041.0053.1	-
<b>wienet LTE LR77v2 CNT</b>	4DI, 2DO, 2AI	-	83.041.0054.1	-
<b>wienet LTE LR77v2 ETH</b>	Ethernet	-	83.041.0055.1	83.041.0055.0

Technical Data		
Housing	Aluminium	Plastic
Dimensions (mm) W x H x D	42 x 113 x 81	42 x 113 x 76
Weight	280 g	220 g
Transmission	GSM/GPRS/EDGE/UMTS/HSDPA/HSPA+/LTE	
Frequency bands	LTE: 800/900/1800/2100/2600 MHz; UMTS: 900/2100 MHz; GSM/GPRS/EDGE: 900/1800/1900 MHz	
SIM-card-slots	1	
RJ45-extension-ports	1	
Interfaces	Ethernet 10/100 Mbit/s; USB 2.0 Type A (Host); 1x Digital In / 1x Digital Out	
Max. Download/Upload	100 Mbit/s / 50 Mbit/s	
VPN-Client for encrypted connection to the control center	IPSec Client/Server; OpenVPN Client/Server; L2TP; PPTP	
Mounting	DIN-rail or table	
Operating voltage	10 - 30 V DC	
Operating temperature	-30 ... +60°C	
Antenna	External GSM-antenna (SMA - 50 Ohm)	
Approvals	CE	
Norms	EN 301 511, v 9.0.2; EN 301 908-1&2, v 3.2.1; ETSI EN 301 489-1 V1.8.1; EN 60950-1:06 ed. 2 + A11:09	

Functions		
Support of NAT/PAT and X.509		
Firewall (SPI)		
VPN: OpenVPN, IPsec, L2TP, GRE		
Easy web interface, DHCP, DynDNS, VRRP; Dial-in		
Router-control by SMS		
Comprehensive mobile statistic options		
Data volume-/roaming-control by SMS		
Status information by SNMP and SMS		
Status by LED		
FTP		
Linux based Operating System: ability to integrate their own applications		

## LTE mobile router 4G „Full“ **wienet LTE LR77 v2f SL**

- 2x SIM-card-slot
- 2x RJ45-Port extension
- Inclusive antenna
- Inclusive RJ45-Patch cable
- Inclusive DIN Rail clip
- Plastic or metal housing



Type	Port 1	Port 2	Part No.	Part No.
<b>LTE mobile router 4G full version</b>			Aluminium	Plastic
<b>wienet LTE LR77v2f SL</b>	-	-	83.041.0500.1	-
<b>wienet LTE LR77v2f SL RS232</b>	RS-232	-	83.041.0501.1	-
<b>wienet LTE LR77v2f SL RS485/422</b>	RS-485/422	-	83.041.0502.1	-
<b>wienet LTE LR77v2f SL MBUS</b>	M-Bus	-	83.041.0503.1	-
<b>wienet LTE LR77v2f SL IO</b>	IO	-	83.041.0504.1	-
<b>wienet LTE LR77v2f SL ETH</b>	ETH	-	83.041.0505.1	-
<b>wienet LTE LR77v2f SL WIFI</b>	-	WI-FI/WLAN	83.041.0506.1	-
<b>wienet LTE LR77v2f SL RS232 RS232</b>	RS-232	RS-232	83.041.0511.1	-
<b>wienet LTE LR77v2f SL RS485 RS232</b>	RS-485/422	RS-232	83.041.0512.1	-
<b>wienet LTE LR77v2f SL MBUS RS232</b>	M-Bus	RS-232	83.041.0513.1	-
<b>wienet LTE LR77v2f SL CNT RS232</b>	IO	RS-232	83.041.0514.1	-
<b>wienet LTE LR77v2f SL ETH RS232</b>	ETH	RS-232	83.041.0515.1	-
<b>wienet LTE LR77v2f SL RS485 RS485</b>	RS-485/422	RS-485/422	83.041.0522.1	-
<b>wienet LTE LR77v2f SL MBUS RS485</b>	M-Bus	RS-485/422	83.041.0523.1	-
<b>wienet LTE LR77v2f SL CNT RS485</b>	IO	RS-485/422	83.041.0524.1	-
<b>wienet LTE LR77v2f SL ETH RS485</b>	ETH	RS-485/422	83.041.0525.1	-
<b>wienet LTE LR77v2f SL RS232 WIFI</b>	RS-232	WI-FI/WLAN	83.041.0561.1	-
<b>wienet LTE LR77v2f SL RS485 WIFI</b>	RS-485/422	WI-FI/WLAN	83.041.0562.1	-
<b>wienet LTE LR77v2f SL MBUS WIFI</b>	M-Bus	WI-FI/WLAN	83.041.0563.1	-
<b>wienet LTE LR77v2f SL CNT WIFI</b>	IO	WI-FI/WLAN	83.041.0564.1	-
<b>wienet LTE LR77v2f SL ETH WIFI</b>	ETH	WI-FI/WLAN	83.041.0565.1	-
<b>wienet LTE LR77v2f SL 3P</b>	3-port Switch	3-port Switch	83.041.0599.1	-

Technical Data		
SIM-card-slots	2	
RJ45-extension-ports	2	
Further technical data see basic version		

Functions		
see basic version		

# Industrial Router – LAN-to-LAN

## LAN-to-LAN router **wienet LAN XR5i v2**

- inklusive 2xRJ45-Patch cable
- Inclusive DIN Rail clip
- Plastic or metal housing



Type	Port 1	Port 2	Part No.	Part No.
<b>LAN-to-LAN router</b>			Aluminium	Plastic
<b>wienet LAN XR5iv2 ETH</b>	Ethernet	-	83.041.0065.1	83.041.0065.0
<b>wienet LAN XR5iv2f SL ETH RS232</b>	Ethernet	RS-232	83.041.0071.1	-
<b>wienet LAN XR5iv2f SL ETH RS485</b>	Ethernet	RS-485	83.041.0072.1	-
<b>wienet LAN XR5iv2f SL RS232 WIFI</b>	RS-232	WI-FI/WLAN	83.041.0081.1	-
<b>wienet LAN XR5iv2f SL RS485 WIFI</b>	RS-485	WI-FI/WLAN	83.041.0082.1	-
<b>wienet LAN XR5iv2f SL MBUS WIFI</b>	M-Bus	WI-FI/WLAN	83.041.0083.1	-
<b>wienet LAN XR5iv2f SL IO WIFI</b>	4DI, 2DO, 2AI	WI-FI/WLAN	83.041.0084.1	-
<b>wienet LAN XR5iv2f SL ETH WIFI</b>	Ethernet	WI-FI/WLAN	83.041.0085.1	-

Technical Data		
Housing	Aluminium	Plastic
Dimensions (mm) W x H x D	42 x 113 x 81	42 x 113 x 76
Weight	280 g	220 g
Transmission	LAN-to-LAN, WI-FI/WLAN	
RJ45-extension-ports	1 (basic version), 2 (full version)	
Interfaces	Ethernet 10/100 Mbit/s; USB 2.0 Typ A (Host); 1x Digital In / 1x Digital Out	
Max. Download/Upload	Fast Ethernet	
VPN-Client for encrypted connection to the control center	IPSec Client/Server; L2TP; PPTP	
Mounting	DIN-rail or table	
Operating voltage	10 - 30 V DC	
Operating temperature	-30 ... +60°C	
Approvals	CE	
Norms	ETSI EN 301 489-1 V1.8.1; EN 60950-1:06 ed. 2 + A11:09	

Functions	
Support of NAT/PAT and X.509	
Firewall (SPI)	
VPN: OpenVPN, IPsec, L2TP, GRE	
Easy web interface, DHCP, DynDNS, VRRP; Dial-in	
PPPoE - DSL-Modem Support	
Status by LED	
SNMP - Integration to the network management	
FTP	
Linux based Operating System: ability to integrate their own applications	

## Omnidirectional rod antenna **wienet GXS606**



Type	Part No.
<b>wienet GXS606</b>	83.041.0210.0

Technical Data	
Frequency bandwidth	GSM, GPRS, EDGE, UMTS
Connector	FME/F
Gain	2.2 dBi
Length of cable	5 m
Dimensions	Length of rod approx. 300 mm

## Top flat antenna **wienet GXR623**



Type	Part No.
<b>wienet GXR623</b>	83.041.0200.0

Technical Data	
Frequency bandwidth	GSM, GPRS, EDGE, UMTS
Connector	FME/F
Gain	2.2 dBi
Length of cable	2.5 m
Dimensions	approx. 75 x 80 x 13 mm



# VPN-Server „Wie-Service24“

## Additional VPN channels to VPN-server Wie-Service24

- Rent of additional VPN-tunnels to VPN-Server of Wieland Electric
- High availability of VPN connections
- Immediately usable
- Client access on the server



Type		Part No.
<b>wienet WIE-SERVICE24-EINZEL-R</b>	VPN-Router-Client	ZD.000.0011.0
<b>wienet WIE-SERVICE24-EINZEL-PC</b>	VPN-PC-Client	ZD.000.0011.1
<b>Properties</b>		
Security by VPN		
Automatic generation of router configurations		
Only outgoing connections to the VPN server Wie-Service24		
No changes in the local network needed		
Connection complete networks without additional route settings		
<b>Contract data</b>		
Calculation	12 months in advance	
Termination	any time at the end of a month	
Administration	Wieland Electric	
Server hardware	Internet high-performance computing center	

## Customer installation of the VPN server Wie-Service24

- Customer installation of the VPN server
- Administration on customer side
- High availability of VPN connections
- Customized layout possible

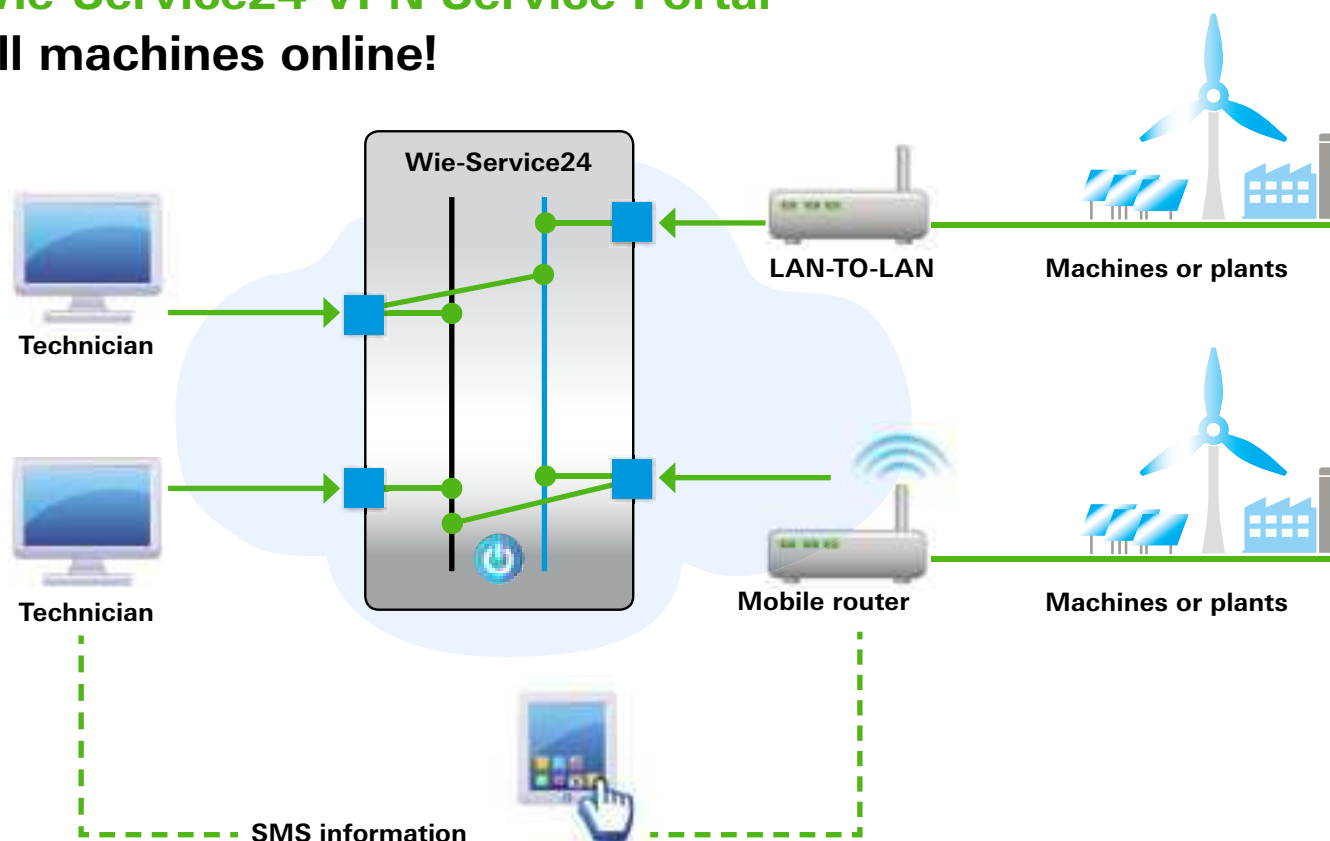


Type	Installation	Part No.
<b>wienet WIESERVICE24-VM</b>	Virtual machine "Oracle Virtual Box"	ZD.000.0012.0
<b>wienet WIESERVICE24-IPC SAVE</b>	On energy-saving PC hardware	ZD.000.0013.0
<b>wienet WIESERVICE24-IPC HIGH</b>	On High Performance 19 "PC	ZD.000.0014.0
<b>wienet WIESERVICE24-DC CUSTOM</b>	In customer data center	ZD.000.0015.0
<b>wienet WIESERVICE24-DC INTERN.</b>	In internet data center ("in the cloud")	ZD.000.0016.0
<b>Properties</b>		
Security by VPN		
Automatic generation of router configurations		
Only outgoing connections to the VPN server Wie-Service24		
No changes in the local network needed		
Connection complete networks without additional route settings		
<b>Contract data</b>		
Calculation	Fixed rate	
Number of VPN connections	> 1000	
Administration	customer	
Server hardware	selectable	



# Wie-Service24 VPN Service Portal

## All machines online!



**The Wie-Service24 VPN service portal is available in different configurations:**

You can try the working with the VPN-server Wie-Service24 with up to 30 routers and one PC client for free. If you need further VPN clients you can rent more router and PC clients. We propose the installation of your own customer VPN server portal. Installation of the portal on a virtual machine, on an industrial PC, data center at customer site or a data center on an internet server.

	Single access	Virtual machine	Industrial PC	Data center Server at Customer	Data center Internet server
Part-No.	ZD.000.0011.0 (Router) ZD.000.0011.1 (PC-Client)	ZD.000.0012.0	ZD.000.0013.0 (Energy Saving) ZD.000.0014.0 (High Performance)	ZD.000.0015.0	ZD.000.0016.0
User access	•	•	•	•	•
Administrator access	–	•	•	•	•
Server hardware from	Wieland	Customer	Wieland	Customer	Provider
Internet connection by	Wieland	Customer	Customer	Customer	Provider
Installation by	Wieland	Customer or Wieland	Wieland	Wieland	Wieland



**More information is available from our technical support:**

Telefon +49 951 9324-995  
 Telefax +49 951 9326-991  
 wie-service24@wieland-electric.com



# wieland

Headquarters:

Wieland Electric GmbH  
Brennerstraße 10 – 14  
96052 Bamberg, Germany

Sales and Marketing Center:

Wieland Electric GmbH  
Benzstraße 9  
96052 Bamberg, Germany

Phone +49 951 9324-0

Fax +49 951 9324-198

[www.wieland-electric.com](http://www.wieland-electric.com)

[www.gesis.com](http://www.gesis.com)

[info@wieland-electric.com](mailto:info@wieland-electric.com)

The addresses of our  
representations worldwide  
are available at:

**[www.wieland-electric.com](http://www.wieland-electric.com)**

## Industrial technology

### Solutions for the control cabinet

- DIN rail terminal blocks
  - Screw, tension spring or push-in connection technology
  - Wire cross sections up to 240 mm<sup>2</sup>
  - Numerous special functions
  - Software solutions interfacing to CAE systems
- Safety
  - Safe signal acquisition
  - Safety switching devices
  - Modular safety modules
  - Compact safety controllers
  - Applicative consultancy and training
- Network engineering and fieldbus systems
  - Remote maintenance via VPN industrial router and VPN service portal
  - Industrial Ethernet switches
  - PLC and I/O systems, standard and increased environmental conditions
- Interface
  - Power supply units
  - Overvoltage protection
  - Coupling relays, semiconductor switches
  - Timer relays, measuring and monitoring relays
  - Analog coupling and converter modules
  - Passive interfaces

### Solutions for field applications

- Decentralized installation and automation technology
  - Electrical installation for wind tower
  - Fieldbus interfaces and motor starters
- Connectors for industrial applications
  - Rectangular and round connectors
  - Aluminum or plastic housings
  - Degree of protection up to IP68
  - Current-carrying capacity up to 100 A
  - Connectors for hazardous areas
  - Modular, application-specific technology

### PC board terminals and connectors

- Screw or spring clamp connection technology
- Spacings: 3.5 mm to 10.16 mm
- Reflow or wave soldering process

## Building and installation technology

- Building installation systems
  - Main power supply connectors IP20/IP65...IP68
  - Bus connectors
  - Low-voltage connectors
  - Power distribution system with flat cables
  - Distribution systems
  - Bus systems in KNX, LON and radio technology
  - DIN rail terminal blocks for electrical installations
  - Overvoltage protection

**contacts  
are  
green.**