

Electrical Connection

DM1: three cable inlets for PG 13,5 Cable Gland

DM2: three cable inlets for 1/2" NPT Cable Gland

DM3: three cable inlets for PG11 Cable Gland

DM4: three cable inlets for M16 x 1,5 Cable Gland

DM5: three cable inlets for M20 x 1,5 Cable Gland



Operating Head Type

F11 - Plain Metal plunger

F12 - Metal roller plunger

F4• - Ø 18 roller lever
F41: nylon roller
F43: metal roller

Conformity / (N.C. contact with positive opening operation)
Max actuation speed [m/s]
Min. force [N] or torque [Nm]: actuation / positive opening operation

0,5
15 / 30

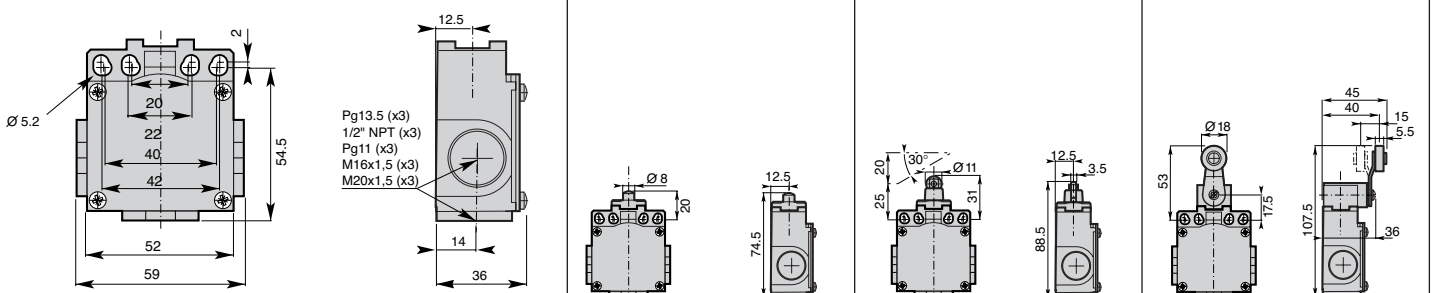
0,3
12 / 30

1,5
0,10 / 0,32

Additional Technical Datas

	Order Code	DM-F11Z11	DM-F12Z11	DM-F4Z11
Z11 Snap Action Contacts (1NO + 1NC)	Operation Diagram			
X11 Non overlapping Slow Action Contacts (1NO + 1NC)	Operation Diagram			
Y11 Overlapping Slow Action Contacts (1NO + 1NC)	Operation Diagram			
W02 Slow Action Contacts (2NC)	Operation Diagram			
W20 Slow Action Contacts (2NO)	Operation Diagram			
Z02 Snap Action Contacts (2NC)	Operation Diagram			
Weight (packing per unit)	[kg]	0,270	0,280	0,325

Dimensions (in mm)



Electrical Connection

- DM1:** three cable inlets for PG 13,5 Cable Gland
- DM2:** three cable inlets for 1/2" NPT Cable Gland
- DM3:** three cable inlets for PG11 Cable Gland
- DM4:** three cable inlets for M16 x 1,5 Cable Gland
- DM5:** three cable inlets for M20 x 1,5 Cable Gland



Operating Head Type

F42 - Ø 50 Rubber roller lever

F4• - Ø 18 roller lever
F45: nylon roller
F46: metal roller

F51 - Adjustable Ø 18 nylon roller lever

Conformity / (N.C. contact with positive opening operation)
Max actuation speed [m/s]
Min. force [N] or torque [Nm]: actuation / positive opening operation

1,5
0,10 / 0,32

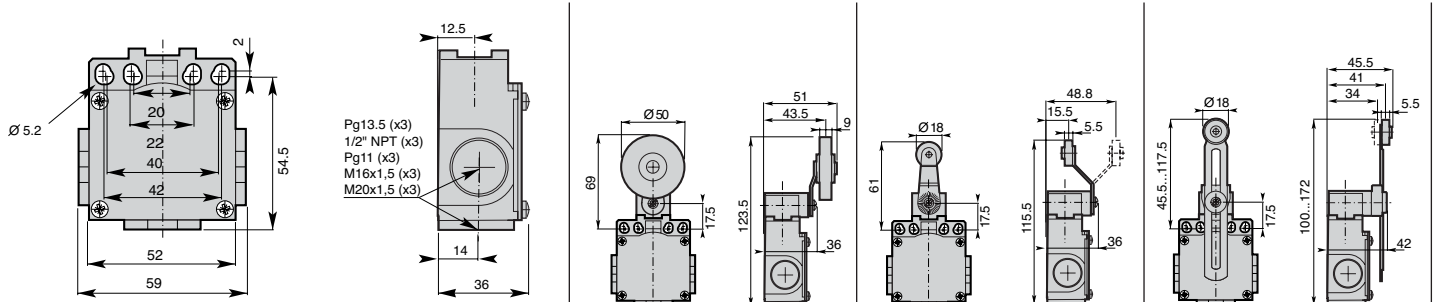
1,5
0,10 / 0,32

1,5
0,10 / 0,32

Additional Technical Datas

	Order Code	DM-F42Z11	DM-F4•Z11	DM-F51Z11
Z11 Snap Action Contacts (1NO + 1NC)	Operation Diagram			
X11 Non overlapping Slow Action Contacts (1NO + 1NC)	Operation Diagram			
Y11 Overlapping Slow Action Contacts (1NO + 1NC)	Operation Diagram			
W02 Slow Action Contacts (2NC)	Operation Diagram			
W20 Slow Action Contacts (2NO)	Operation Diagram			
Z02 Snap Action Contacts (2NC)	Operation Diagram			
Weight (packing per unit)	[kg]	0,345	0,340	0,335

Dimensions (in mm)





**F52 - Adjustable
Ø 50 rubber
roller lever**

1,5
0,10 / 0,32



**F55 - Adjustable
lever with adjustable
Ø 50 rubber roller**

1,5
0,10 / 0,32



**F61 - Nylon actuator
with stainless
steel spring**

1,5
0,10 / -



**F7 - Adjustable
rod lever**

F71: stainless steel rod Ø3
F72: fiberglass rod Ø3
F75: square steel rod 3x3

1,5
0,10 / 0,32



**F7 - Adjustable
Ø 6 rod lever**

F73: nylon rod
F74: fiberglass rod

1,5
0,10 / 0,32

<p>DM-F52Z11</p>	<p>DM-F55Z11</p>	<p>DM-F61Z11</p>	<p>DM-F7-Z11</p>	<p>DM-F7-Z11</p>
<p>DM-F52X11</p>	<p>DM-F55X11</p>	<p>DM-F61X11</p>	<p>DM-F7-X11</p>	<p>DM-F7-X11</p>
<p>DM-F52Y11</p>	<p>DM-F55Y11</p>	<p>DM-F61Y11</p>	<p>DM-F7Y11</p>	<p>DM-F7Y11</p>
<p>DM-F52W02</p>	<p>DM-F55W02</p>	<p>DM-F61W02</p>	<p>DM-F7-W02</p>	<p>DM-F7-W02</p>
<p>DM-F52W20</p>	<p>DM-F55W20</p>	<p>DM-F61W20</p>	<p>DM-F7-W20</p>	<p>DM-F7-W20</p>
<p>DM-F52Z02</p>	<p>DM-F55Z02</p>	<p>DM-F61Z02</p>	<p>DM-F7-Z02</p>	<p>DM-F7-Z02</p>
0,355	0,355	0,305	0,380	0,390

